

AMALIE

Better than it has to be®
Since 1903



IMPERIAL

TURBO FORMULA

SAE 10W-30

MOTOR OIL

API: SP, SN/SN Plus, ILSAC GF-6A

BENEFITS:

- » LSPI (Low Speed Pre-Ignition) Protection Throughout the Drain Interval
- » GPF (Gas Particulate Filter) Compatible
- » Excellent Oil Thickening Control
- » Increased Wear Protection
- » Improved Deposit Control
- » Protection Across a Wide Temperature Operating Range



For Gasoline and Diesel Engines

MADE IN U.S.A.



Better than it has to be[®]
Since 1903



AMALIE Imperial Turbo Formula 10W-30 is formulated to exceed the latest API SP and ILSAC GF-6A engine oil categories. Incorporating high viscosity index base oils, shear stable viscosity modifiers and the latest additive technology, it is specifically formulated for the rigorous environment of gas-direct engine (GDI) and turbo gas-direct engine (TGDI) designs as well as providing increased protection for carbureted or normally fuel injected engines. **AMALIE Imperial Turbo Formula 10W-30** offers improved performance for wear control, oxidative stability, piston cleanliness, and chain wear over previous API and ILSAC oil categories.

Always consult your vehicle's owner's manual when selecting the appropriate viscosity and service grade.

TYPICAL PHYSICAL AND CHEMICAL PROPERTIES

Viscosity Grade.....	SAE 10W-30
Kinematic Viscosity @100°C, cSt.....	10.5
Kinematic Viscosity @40°C, cSt.....	72.0
Viscosity Index.....	132
Cold Cranking Viscosity, cP @ (-25°C).....	6500
Flash Point, °C (°F).....	220 (428)
Pour Point, °C (°F).....	-33 (-27.4)
Density, S.G.....	0.874
MRV, cP @ (-30°C).....	24,000

Typical values are listed. Variations not affecting the performance of this fluid may occur during production; however, these variations will not fall outside of set specification parameters.

Please consult AMALIE Technical Services or your local representative for a full listing of applications.

Technical Services: • (800) 368-1264 • techservices@amalie.com

IMPERIAL TURBO FORMULA RESOURCE CONSERVING

VISCOSITY	PACK SIZE	PART #
10W-30	12-1 Quart	160-71076-56
	4-1 Gallon	160-71077-36
	6 Gallon	160-71070-21
	55 Gallon	160-71073-05

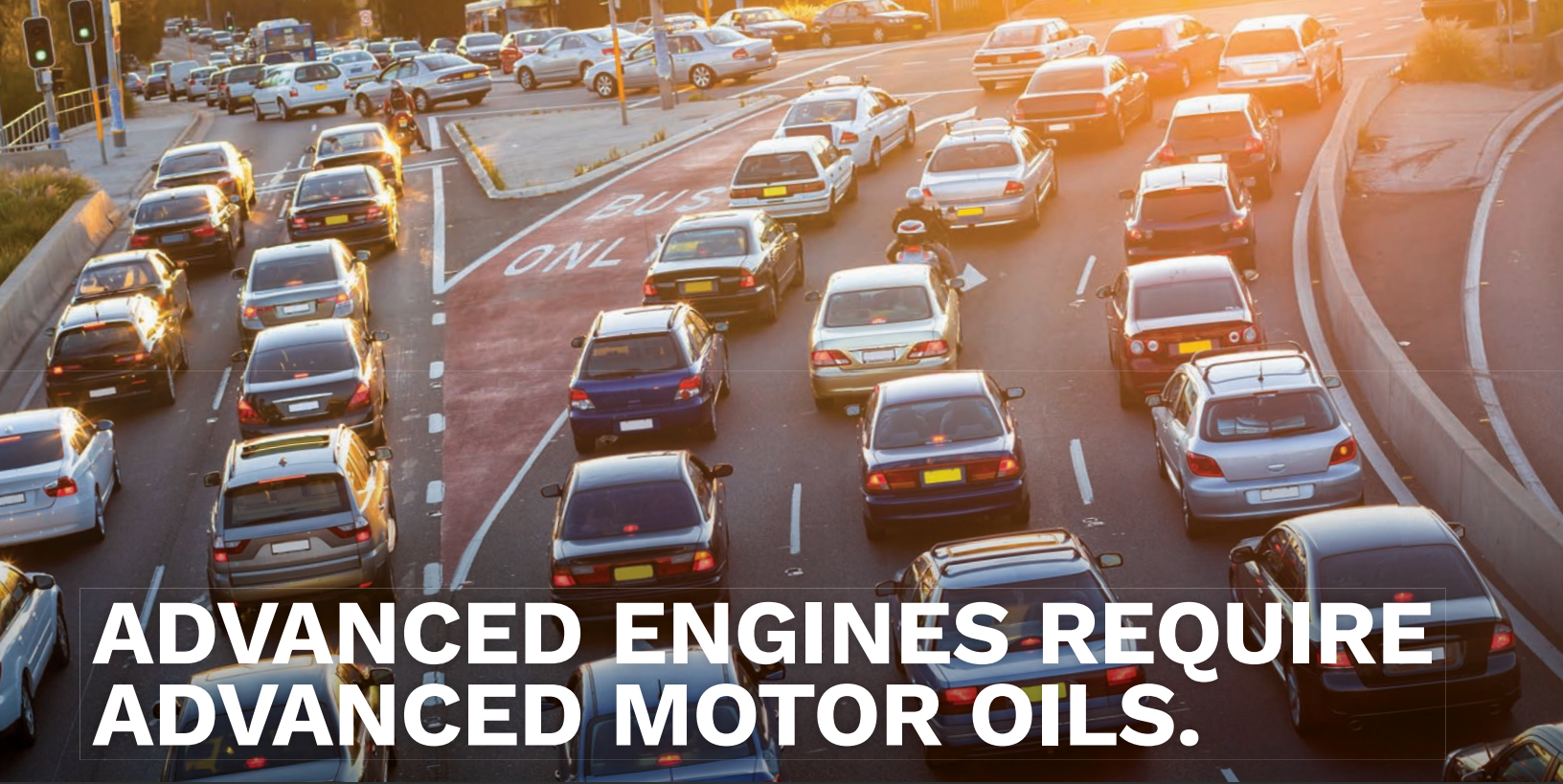
Always refer to your vehicles operating manual to select the correct grade of oil for your engine. The data presented herein are believed to be accurate; however, Amalie Oil Company shall not be liable for its content and makes no warranty with respect thereto.

Health and Safety

Safety Data Sheets (SDS) are available from your sales representative or at AMALIE.com.

APPLICATIONS

AMALIE IMPERIAL TURBO FORMULA 10W-30 is recommended for service fill applications for Ford, Chrysler, GM, Honda, Toyota, Hyundai, Nissan, and other Asian or European brands when 10W-30 API SP, SN / SN Plus, SN, SM/CF, ILSAC GF-6A, 5 or previous category engine oil is specified.



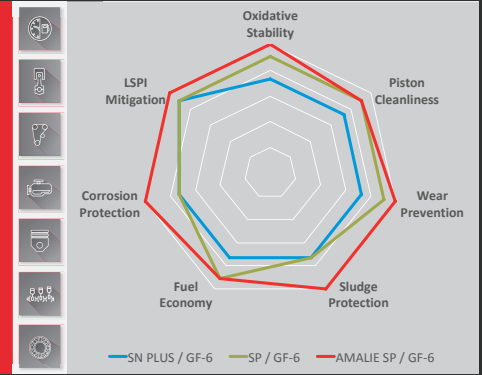
ADVANCED ENGINES REQUIRE ADVANCED MOTOR OILS.

API SP/ILSAC GF-6 is a significant category upgrade. AMALIE Motor Oils have been tried and tested against 7 new tests to ensure modern and next generation engines are protected so that they can perform to their full potential.

For the first time ever, the ILSAC category is split into two:

7 NEW TESTS

- Fuel Economy GF-6A/GF-6B
- LSPI
- Chain Wear
- Sludge/Varnish
- Oxidation/Deposits
- Wear
- Corrosion



ILSAC GF-6A
Replaces the ILSAC GF-5 specification and is represented by the starburst/certification trademark.



ILSAC GF-6B
Provides further fuel economy benefits compared to ILSAC GF-6A and is defined for 0W-16 viscosity grade motor oils only.



Better than it has to be®
Since 1903

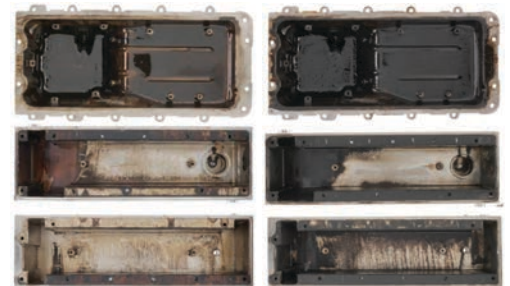
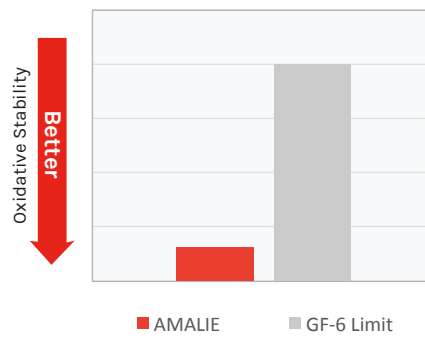
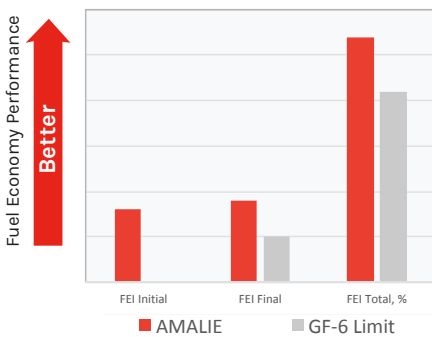


AMALIE MOTOR OIL SP PRODUCT LINE

Built on the same proven and trusted approach to low speed pre-ignition (LSPI) protection AMALIE introduced in the 2017 API SN PLUS upgrade. In addition, API SP brings additional enhanced benefits in engine protection and ILSAC GF-6 enables better fuel economy performance.

Available in a full range of viscosity grades from mineral to synthetic, including GM dexos1™ Gen 3 and high mileage options.

AMALIE MOTOR OILS – PROOF OF PERFORMANCE



AMALIE GF-6 Motor Oil Technology

Traditional GF-5 Motor Oil Technology

Greater Vehicle Efficiency

AMALIE Motor Oils exceed the stringent requirements for fuel efficiency to ensure consumers continue to minimize consumption all the way to their next oil change.

Reduced Oil Thickening

AMALIE Motor Oils resist thermal breakdown to protect the motor oil from thickening, allowing for oil to be pumped throughout the engine to ensure protection throughout the oil drain interval.

Enhanced Engine Cleanliness

AMALIE Motor Oils maintain engine cleanliness to ensure critical engine and turbocharged GDI components operate as intended even in extreme operating conditions.



AMALIE GF-6 Motor Oil Technology



Traditional GF-5 Motor Oil Technology

Improved Wear Control

AMALIE Motor Oils mitigate catastrophic piston damage caused by LSPI and minimize engine wear to ensure efficient and reliable operation to help extend the useful life of the vehicle.



Better than it has to be
Since 1903

Please visit AMALIE.com
or call 800-368-1264 for
more information.