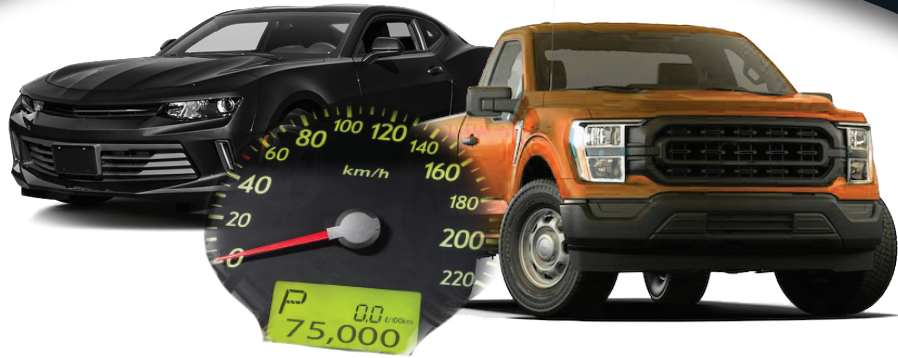


AMALIE

Better than it has to be[®]
Since 1903



FOR ENGINES OVER

75,000

MILES

HIGH MILEAGE

SAE 5W-30

SEMI-SYNTHETIC MOTOR OIL

API: SP, SN/SN Plus, ILSAC GF-6A

BENEFITS:

- » Formulated to Prevent LSPI (Low-Speed Pre-Ignition) in GDI and TGDI Engines
- » Excellent Protection for Metal Components from Rust, Corrosion and Wear
- » Compatible with Conventional and Synthetic Engine Oils
- » Improved Sludge Control
- » Reconditions Seals to Reduce Oil Leaks



For Gasoline and Diesel Engines

MADE IN U.S.A.



Better than it has to be[®]
Since 1903

HIGH MILEAGE

SEMI-SYNTHETIC



AMALIE High Mileage Semi-Synthetic 5W-30 is specially designed to help reduce leaks and oil consumption in worn or higher mileage engines. It is formulated to clean out sludge buildup and keep engines running clean with increased efficiency and power. It is particularly beneficial for engines with over 75,000 miles.

AMALIE High Mileage Semi-Synthetic 5W-30 is engineered for use in gas-direct (GDI) and turbo gas-direct engine (TGDI) designs as well as carbureted or normally fuel injected engines. A proprietary formulation utilizing a blend of premium synthetic and conventional base stocks, a shear stable viscosity modifier, and the latest additive technologies provide an excellent defense against low-speed pre-ignition (LSPI) in TGDI engines and enhanced protection for all gasoline engine designs. It may be used in passenger cars and light duty trucks requiring the use of API SP, SN / SN Plus, SN, SM, SL, or when ILSAC GF-6, or prior service category oils are required. It offers increased oxidation performance, better wear protection, and enhanced shear stability over previous oil categories and conventional formulations.

Always consult your vehicle's owner's manual when selecting the appropriate viscosity and service grade.

TYPICAL PHYSICAL AND CHEMICAL PROPERTIES

Viscosity Grade.....	SAE 5W-30
Kinematic Viscosity @100°C, cSt.....	10.75
Kinematic Viscosity @40°C, cSt.....	64.3
Viscosity Index.....	157
Cold Cranking Viscosity, cP @ (-30°C).....	6200
Flash Point, °C (°F).....	220 (428)
Pour Point, °C (°F).....	-39 (-38)
Density, S.G.....	0.865
MRV, cP @ (-35°C).....	23,000

Typical values are listed. Variations not affecting the performance of this fluid may occur during production; however, these variations will not fall outside of set specification parameters.

Please consult AMALIE Technical Services or your local representative for a full listing of applications.

Technical Services: • (800) 368-1264 • techservices@amalie.com

**HIGH MILEAGE SEMI-SYNTHETIC
RESOURCE CONSERVING**

VISCOSITY	PACK SIZE	PART #
5W-30	12-1 Quart	160-79466-56
	4-1 Gallon	160-79467-36
	6 Gallon	160-79460-21
	55 Gallon	160-79463-05

Always refer to your vehicles operating manual to select the correct grade of oil for your engine. The data presented herein are believed to be accurate; however, Amalie Oil Company shall not be liable for its content and makes no warranty with respect thereto.

Health and Safety

Safety Data Sheets (SDS) are available from your sales representative or at AMALIE.com.

APPLICATION CHART

SPECIFICATIONS	High Mileage Semi-Synthetic SAE 5W-30
API	
SP, SN / SN Plus, SM, SL	✓
CF	✓
ILSAC:	
GF-6A, GF-5, GF-4, GF-3	✓
Ford:	
M2C 961-A	✓
M2C 946	✓
Chrysler:	
MS 6395K	✓
General Motors:	
GM 4718M	✓
GM 6094M	✓
Honda (where 5W-30 is specified)	✓
Hyundai (where 5W-30 is specified)	✓
Nissan (where 5W-30 is specified)	✓
Toyota (where 5W-30 is specified)	✓
CID AA-52039	✓
Mil-L-2104-B	✓
Mil-L-46152	✓

✓ - Exceeds Performance Requirements

Some OEM Specifications are Viscosity Specific. Please Consult your AMALIE Representative.



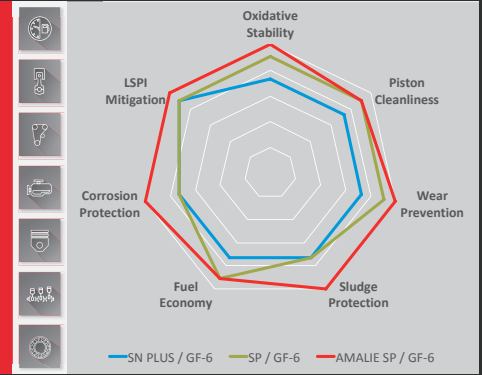
ADVANCED ENGINES REQUIRE ADVANCED MOTOR OILS.

API SP/ILSAC GF-6 is a significant category upgrade. AMALIE Motor Oils have been tried and tested against 7 new tests to ensure modern and next generation engines are protected so that they can perform to their full potential.

For the first time ever, the ILSAC category is split into two:

7 NEW TESTS

- Fuel Economy GF-6A/GF-6B
- LSPI
- Chain Wear
- Sludge/Varnish
- Oxidation/Deposits
- Wear
- Corrosion



ILSAC GF-6A
Replaces the ILSAC GF-5 specification and is represented by the starburst/certification trademark.



ILSAC GF-6B
Provides further fuel economy benefits compared to ILSAC GF-6A and is defined for 0W-16 viscosity grade motor oils only.



Better than it has to be®
Since 1903

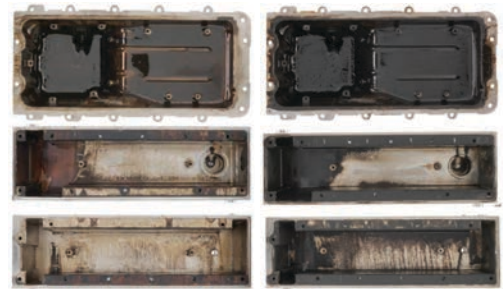
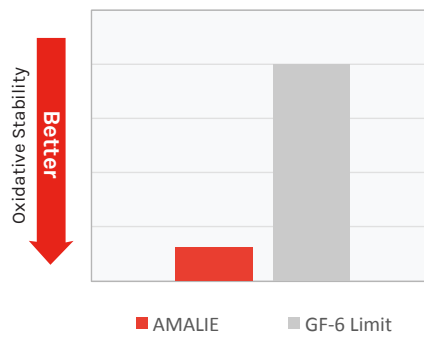
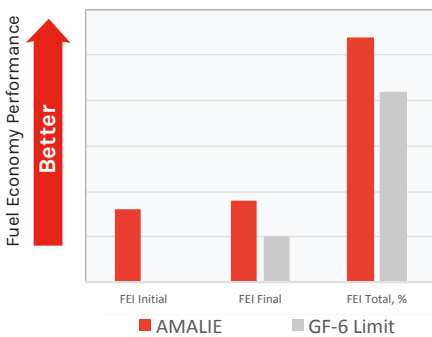


AMALIE MOTOR OIL SP PRODUCT LINE

Built on the same proven and trusted approach to low speed pre-ignition (LSPI) protection AMALIE introduced in the 2017 API SN PLUS upgrade. In addition, API SP brings additional enhanced benefits in engine protection and ILSAC GF-6 enables better fuel economy performance.

Available in a full range of viscosity grades from mineral to synthetic, including GM dexos[™] Gen 3 and high mileage options.

AMALIE MOTOR OILS – PROOF OF PERFORMANCE



AMALIE GF-6 Motor Oil Technology

Traditional GF-5 Motor Oil Technology

Greater Vehicle Efficiency

AMALIE Motor Oils exceed the stringent requirements for fuel efficiency to ensure consumers continue to minimize consumption all the way to their next oil change.

Reduced Oil Thickening

AMALIE Motor Oils resist thermal breakdown to protect the motor oil from thickening, allowing for oil to be pumped throughout the engine to ensure protection throughout the oil drain interval.

Enhanced Engine Cleanliness

AMALIE Motor Oils maintain engine cleanliness to ensure critical engine and turbocharged GDI components operate as intended even in extreme operating conditions.



AMALIE GF-6 Motor Oil Technology



Traditional GF-5 Motor Oil Technology

Improved Wear Control

AMALIE Motor Oils mitigate catastrophic piston damage caused by LSPI and minimize engine wear to ensure efficient and reliable operation to help extend the useful life of the vehicle.



Better than it has to be
Since 1903

Please visit AMALIE.com
or call 800-368-1264 for
more information.